

## How to Modify & Install RHD Power Retractable Mirrors on LHD SVXi

To start with, it has been a PITA to do this. The wiring is very easy, you simply need to splice and connect the wires between mirror and its adjustment button assembly.

The JDM driver side mirror (passenger side on USDMs) can be installed and used without any modification on its internals. As for the JDM passenger mirror (driver side on USDMs), the angle of the mirror is not correct for right hand SVXi, so modification needs to be done.

I had to take apart the LH mirror anyways because it had one of the adjustment tabs broken on the inside. You cannot simply remove the glass mirror out of the assembly or your entire mirror becomes useless.

This is what I used to take the mirror apart:





In millimeters, not inches.



6 Washers were used, 3 at a time.

You start with the three screws at the bottom of the mirror:



Then you remove the side cover:



You can see then a screw on the inside, you LEAVE THAT THERE for now:



You will need now to gently push the top of the glass to the inside and make some gap to see the lower inner screws:





You squeeze a screwdriver in there and you start removing them one by one, VERY gently and without breaking the mirror. Note that you need to actually remove them entirely OUT of the assembly.

When you remove all 6 screws, you go back to the side screw and remove it in turn (In yellow). Then you will have to squeeze the black tabs a little bit to the inside to free the outer black ring from the housing:



Next, you will need to heat the tip of a Cutter or a flat head screwdriver and remove a part of the black ring to free it from the housing:



Then you remove it gently from the assembly:



Here is a clearer picture of the part you need to cut from the ring and the type of screws that go each in place:



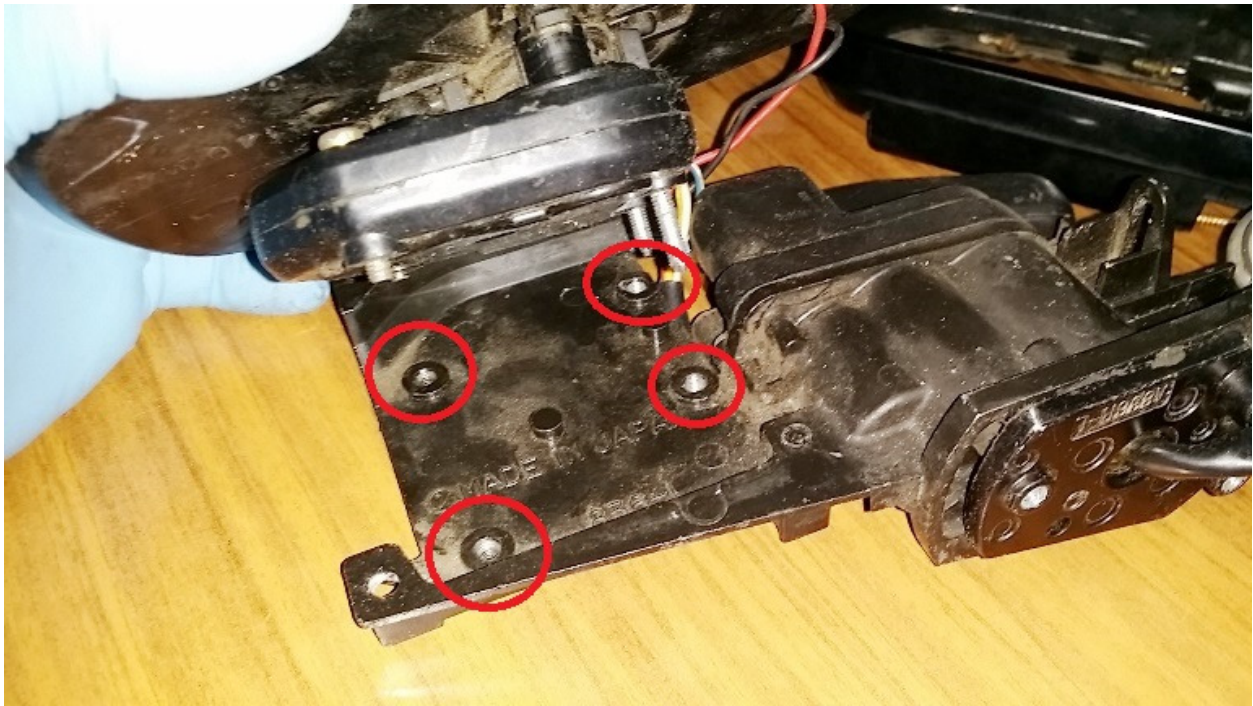
Now you will need to push the inner mirror assembly gently to the inside to free it from the cover:





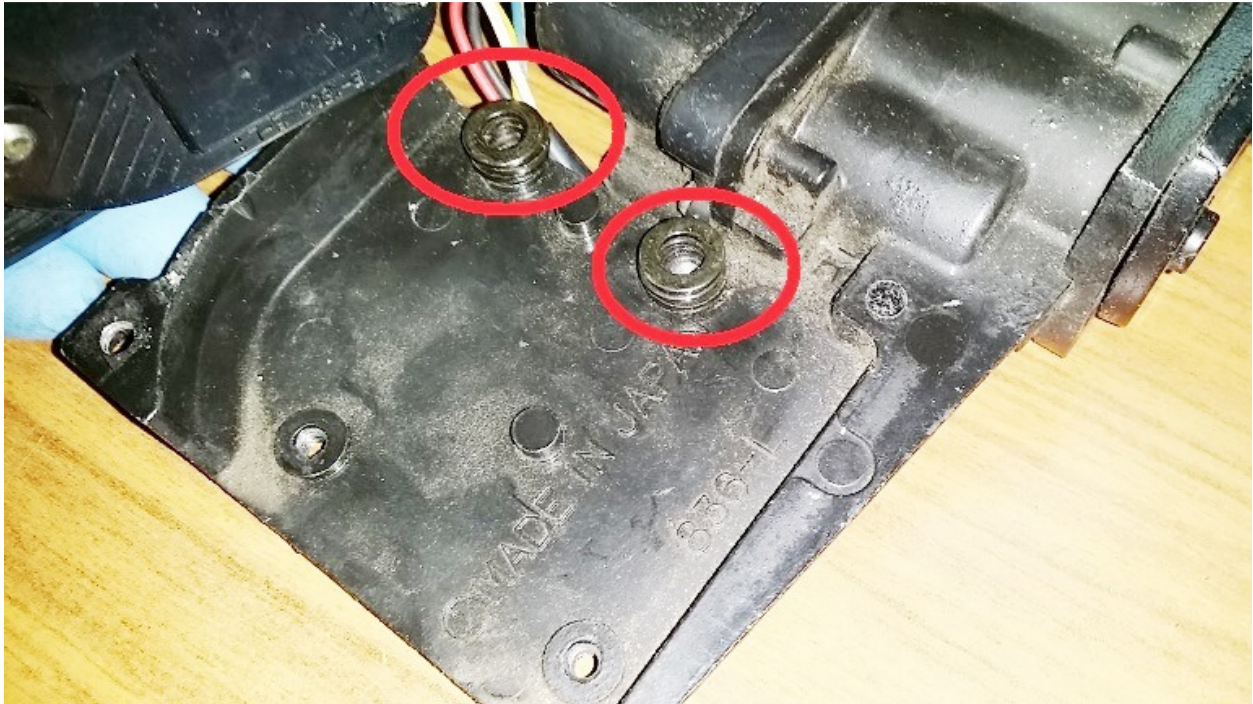


You will need to use now the curved screwdriver to take apart the glass mirror assembly from its chassis:



There are 4 distinct screws, (of which the ones on the right in the upper picture) need to be replaced by taller ones. You can squeeze there at most 7mm taller screws instead of the original ones, which is more than enough for the modification.

Now, you will need to use the 6 washers, 3 at a time under the glass mirror housing along with the taller screws. This way you adjust correctly the position of the mirror assembly via the driver user:



After reinstalling the mirror to its chassis, do NOT overs tighten the 4 screws till the very end or else you will risk squeezing the inner motors and rotating parts; It will become stuck. Test it out as it is on the car BEFORE putting everything back together.

And finally you will have to connect the retractable button to the mirror, I am sure you will figure out which wires to connect by comparing the USDM and JDM mirror plugs. Remember; always test the mechanism before putting your car back together.

